

Полиетиленови фитинги от **PE100**,
инжекционно ляти, за пренос на питейна вода, съгласно изискванията на стандарт **EN 12201:3**
и **EN 1555-3**.

*Polyethylene fittings made from **PE100**,
mould injection, intended for the conveyance of water for human consumption or gas, fulfilling the
requirements of standards **EN 12201:3** and **EN 1555**.*

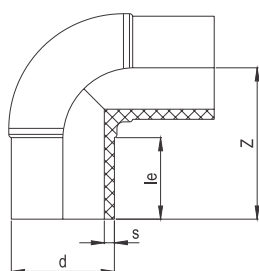


КОЛЯНО 90° PE100

ELBOW 90° PE100

Инжекционно лято
Удължено
SDR11:10 бара газ/16 бара вода
SDR17:5 бара газ/10 бара вода

*Injected
Long Spigot
SDR 11:10 bar Gas/16 Water
SDR17:5 bar Gas/10 Water*



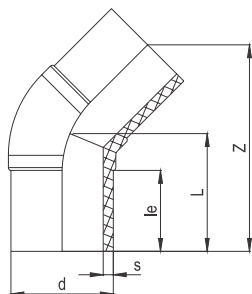
d	le	Z	s мм/PN16	s мм/PN10	Кашон/бр.
mm	mm	mm	SDR 11	SDR 17	
20	41	63	3.0		60
25	41	63	3.0		60
32	44	72	3.0		50
40	49	80	3.7		42
50	55	92	4.6		25
63	63	111	5.8	3.8	30
75	70	126	6.8	4.5	30
90	79	145	8.2	5.4	20
110	82	161	10.0	6.6	12
125	87	169	11.4	7.4	12
140	92	195	12.7	8.3	8
160	98	205	14.6	9.5	4
180	105	225	16.4	10.7	4
200	112	245	18.2	11.9	4
225	120	264	20.5	13.4	2
250	129	284	22.7	14.8	1
280	139	327	25.4	16.6	1
315	150	358	28.6	18.7	1
355	164	401	32.3	21.1	1
400	179	451	36.4	23.7	1

ДЪГА 45° PE100

ELBOW 45° PE100

Инжекционно лята
Удължена
SDR11:10 бара газ/16 бара вода
SDR17:5 бара газ/10 бара вода

*Injected
Long Spigot
SDR 11:10 bar Gas/16 Water
SDR17:5 bar Gas/10 Water*



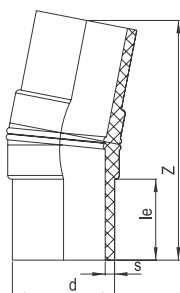
d	le	l	Z	s мм/PN16	s мм/PN 10	Кашон/бр.
mm	mm	mm	mm	SDR 11	SDR 17	
20	41	68	119	3.0		60
25	41	72	125	3.0		50
32	44	78	136	3.0		50
40	49	83	145	3.7		32
50	55	88	153	4.6		62
63	63	92	160	5.8	3.8	42
75	70	101	176	6.8	4.5	30
90	79	116	202	8.2	5.4	24
110	82	126	220	10.0	6.6	18
125	87	137	239	11.4	7.4	12
140	92	143	250	12.7	8.3	12
160	98	156	273	14.6	9.5	9
180	105	166	290	16.4	10.7	4
200	112	178	311	18.2	11.9	4
225	120	195	341	20.5	13.4	2
250	129	210	368	22.7	14.8	2
280	139	232	406	25.4	16.6	1
315	150	246	430	28.6	18.7	1
355	164	280	490	32.3	21.1	1
400	179	313	548	36.4	23.7	1

КОЛЯНО 11° PE100

ELBOW 11° PE100

Инжекционно лято
Удължено
Заварена конструкция
SDR11:10 бара газ/16 бара вода
SDR17:5 бара газ/10 бара вода

*Injected
Long Spigot
Welded design
SDR 11:10 bar Gas/16 Water
SDR17:5 bar Gas/10 Water*



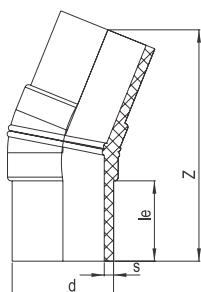
d	le	Z	s мм/PN16	s мм/PN10	Кашон/бр.
mm	mm	mm	SDR 11	SDR 17	
90	79	200	8.2	5.4	24
110	82	209	10.0	6.6	18
125	87	222	11.4	7.4	12
140	92	237	12.7	8.3	12
160	98	251	14.6	9.5	9
180	105	268	16.4	10.7	4
200	112	284	18.2	11.9	4
225	120	310	20.5	13.4	2
250	129	337	22.7	14.8	2
280	139	370	25.4	16.6	1
315	150	412	28.6	18.7	1
355	164	446	32.3	21.1	1
400	179	476	36.4	23.7	1

КОЛЯНО 22° PE100

ELBOW 22° PE100

Инжекционно лято
Удължено
Заварена конструкция
SDR11:10 бара газ/16 бара вода
SDR17:5 бара газ/10 бара вода

*Injected
Long Spigot
Welded design
SDR 11:10 bar Gas/16 Water
SDR17:5 bar Gas/10 Water*



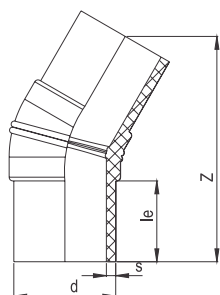
d	le	Z	s мм/PN16	s мм/PN10	Кашон/бр.
mm	mm	mm	SDR 11	SDR 17	
90	79	208	8.2	5.4	24
110	82	217	10.0	6.6	18
125	87	231	11.4	7.4	12
140	92	247	12.7	8.3	12
160	98	263	14.6	9.5	9
180	105	279	16.4	10.7	4
200	112	296	18.2	11.9	4
225	120	323	20.5	13.4	2
250	129	353	22.7	14.8	2
280	139	385	25.4	16.6	1
315	150	435	28.6	18.7	1
355	164	463	32.3	21.1	1
400	179	501	36.4	23.7	1

КОЛЯНО 30° PE100

ELBOW 30° PE100

Инжекционно лято
Удължено
Заварена конструкция
SDR11:10 бара газ/16 бара вода
SDR17:5 бара газ/10 бара вода

*Injected
Long Spigot
Welded design
SDR 11:10 bar Gas/16 Water
SDR17:5 bar Gas/10 Water*



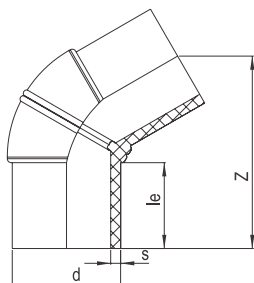
d	le	Z	s мм/PN16	s мм/PN10	Кашон/бр.
mm	mm	mm	SDR 11	SDR 17	
90	79	224	8.2	5.4	24
110	82	243	10.0	6.6	18
125	87	261	11.4	7.4	12
140	92	278	12.7	8.3	12
160	98	298	14.6	9.5	9
180	105	317	16.4	10.7	4
200	112	345	18.2	11.9	4
225	120	373	20.5	13.4	2
250	129	405	22.7	14.8	2
280	139	444	25.4	16.6	1
315	150	478	28.6	18.7	1
355	164	475	32.3	21.1	1
400	179	522	36.4	23.7	1

КОЛЯНО 60° PE100

ELBOW 60° PE100

Инжекционно лято
Удължено
Заварена конструкция
SDR11:10 бара газ/16 бара вода
SDR17:5 бара газ/10 бара вода

*Injected
Long Spigot
Welded design
SDR 11:10 bar Gas/16 Water
SDR17:5 bar Gas/10 Water*



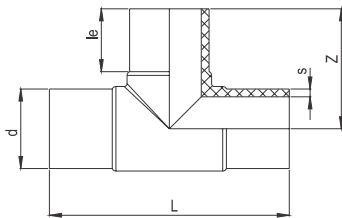
d	le	Z	s мм/PN16	s мм/PN10	Кашон/бр.
mm	mm	mm	SDR 11	SDR 17	
90	79	185	8.2	5.4	24
110	82	201	10.0	6.6	18
125	87	220	11.4	7.4	12
140	92	232	12.7	8.3	12
160	98	252	14.6	9.5	9
180	105	271	16.4	10.7	4
200	112	291	18.2	11.9	4
225	120	320	20.5	13.4	2
250	129	351	22.7	14.8	2
280	139	390	25.4	16.6	1
315	150	416	28.6	18.7	1
355	164	472	32.3	21.1	1
400	179	525	36.4	23.7	1

ТРОЙНИК 90° PE100

TEE 90°, equal PE100

Инжекционно лят
Удължен
SDR11:10 бара газ/16 бара вода
SDR17:5 бара газ/10 бара вода

*Injected
Long Spigot
SDR 11:10 bar Gas/16 Water
SDR17:5 bar Gas/10 Water*



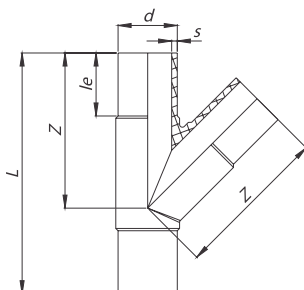
d	L	le	Z	s мм/PN16	s мм/PN10	Кашон/бр.
mm	mm	mm	mm	SDR 11	SDR 17	
20	143	41	74	3.0		50
25	158	41	78	3.0		40
32	166	44	82	3.0		30
40	188	49	96	3.7		50
50	229	55	114	4.6		47
63	225	63	114	5.8	3.8	36
75	261	70	130	6.8	4.5	22
90	290	79	142	8.2	5.4	14
110	327	82	162	10.0	6.6	14
125	356	87	178	11.4	7.4	8
140	380	92	189	12.7	8.3	6
160	417	98	208	14.6	9.5	4
180	458	105	225	16.4	10.7	3
200	481	112	236	18.2	11.9	2
225	527	120	260	20.5	13.4	2
250	590	129	292	22.7	14.8	2
280	690	139	340	25.4	16.6	1
315	712	150	352	28.6	18.7	1
355	789	164	394	32.3	21.1	1
400	877	179	438	36.4	23.7	1

ТРОЙНИК 45° PE100

TEE 45°, equal PE100

Инжекционно лят
Удължен
SDR11:10 бара газ/16 бара вода
SDR17:5 бара газ/10 бара вода

*Injected
Long Spigot
SDR 11:10 bar Gas/16 Water
SDR17:5 bar Gas/10 Water*



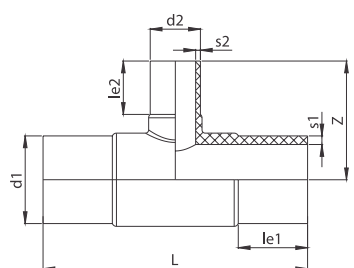
d	L	le	Z	s мм/PN16	s мм/PN10	Кашон/бр.
mm	mm	mm	mm	SDR 11	SDR 17	
63	256	63	165	5.8	3.8	22
75	286	70	186	6.8	4.6	
90	328	79	216	8.2	5.6	
110	375	82	250	10.0	6.8	9
125	419	87	280	11.4	7.6	
160	540	98	360	14.6	9.8	
180	590	105	400	16.4	11.0	
200	638	112	434	18.2	12.3	
225	700	120	478	20.5	13.8	
250	729	129	507	22.7	14.8	1

ТРОЙНИК 90°, Редуктивен PE100

TEE 90°, REDUCED

Инжекционно лят
Удължен
SDR11:10 бара газ/16 бара вода
SDR17:5 бара газ/10 бара вода

Injected
Long Spigot
SDR 11:10 bar Gas/16 Water
SDR17:5 bar Gas/10 Water



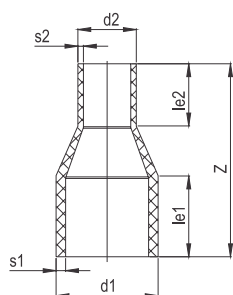
d1	d2	L	le1	le2	Z	s1 /PN16	s2 /PN16	s1/PN10	s2/PN10	Кашон
mm	mm	mm	mm	mm	mm	SDR 11	SDR 11	SDR 17	SDR 17	бр.
50	40	229	55	49	94	5.8	3.7			32
50	32	229	55	44	88	5.8	3.0			32
50	25	229	55	41	85	5.8	3.0			32
63	50	225	63	55	100	5.8	4.6			36
63	40	225	63	49	99	5.8	3.7			36
63	32	225	63	44	93	5.8	3.0			36
75	63	261	70	63	121	6.8	5.8	4.5	3.8	22
75	50	261	70	55	113	6.8	4.6			22
75	40	261	70	49	106	6.8	3.7			22
75	32	260	70	44	100	6.8	3.0			22
90	75	290	79	70	136	8.2	6.8	5.4	4.5	14
90	63	290	79	63	132	8.2	5.8	5.4	3.8	14
90	50	290	79	55	124	8.2	4.6			14
110	90	327	82	79	157	10.0	8.2	6.6	5.4	14
110	75	327	82	70	151	10.0	6.8	6.6	4.5	14
110	63	327	82	63	149	10.0	5.8	6.6	3.8	14
110	50	327	82	55	147	10.0	4.6			14
110	32	327	82	55	140	10.0	3.0			14
125	110	356	87	82	176	11.4	10.0	7.4	6.6	8
125	90	356	87	79	172	11.4	8.2	7.4	5.4	8
140	125	380	92	87	184	12.7	11.4	8.3	7.4	6
140	110	380	92	82	179	12.7	10.0	8.3	6.6	6
140	90	380	92	79	175	12.7	8.2	8.3	5.4	6
160	140	417	98	92	200	14.6	12.7	9.5	8.3	4
160	125	417	98	87	200	14.6	11.4	9.5	7.4	4
160	110	417	98	82	195	14.6	10.0	9.5	6.6	4
160	90	417	98	79	187	14.6	8.2	9.5	5.4	5
160	75	417	98	70	182	14.6	6.8	9.5	4.5	5
160	63	417	98	63	175	14.6	5.8	9.5	3.8	5
180	160	458	105	98	222	16.4	14.6	10.7	9.5	3
180	125	458	105	87	215	16.4	11.4	10.7	7.4	3
180	110	458	105	82	210	16.4	10.0	10.7	6.6	3
180	90	458	105	79	206	16.4	8.2	10.7	5.4	3
200	160	481	112	98	227	18.2	14.6	11.9	9.5	3
200	125	481	112	87	225	18.2	11.4	11.9	7.4	3
200	110	481	112	82	211	18.2	10.0	11.9	6.6	3
200	90	481	112	79	207	18.2	8.2	11.9	5.4	3
200	63	481	112	63	191	18.2	5.8	11.9	3.8	3
225	160	527	120	98	242	20.5	14.6	13.4	9.5	2
225	125	527	120	87	239	20.5	11.4	13.4	7.4	2
225	110	527	120	82	226	20.5	10.0	13.4	6.6	2
225	90	527	120	79	222	20.5	8.2	13.4	5.4	2
250	225	590	129	120	285	22.7	20.5	14.8	13.4	2
250	200	590	129	112	278	22.7	18.2	14.8	11.9	2
250	160	590	129	98	267	22.7	14.6	14.8	9.5	2
250	125	590	129	87	252	22.7	11.4	14.8	7.4	2
250	110	590	129	82	251	22.7	10.0	14.8	6.6	2
250	90	590	129	79	243	22.7	8.2	14.8	5.4	2
280	250	690	139	129	334	25.4	22.7	16.6	14.8	1
280	225	690	139	120	320	25.4	20.5	16.6	13.4	1
280	200	690	139	112	316	25.4	18.2	16.6	11.9	1
280	160	690	139	98	302	25.4	14.6	16.6	9.5	1
280	110	690	139	82	290	25.4	10.0	16.6	6.6	1
315	250	712	150	129	332	28.6	22.7	18.7	14.8	1
315	225	712	150	120	325	28.6	20.5	18.7	13.4	1
315	200	712	150	112	317	28.6	18.2	18.7	11.9	1
315	160	712	150	98	303	28.6	14.6	18.7	9.5	1
315	110	712	150	82	293	28.6	10.0	18.7	6.6	1

НАМАЛИТЕЛ PE100

REDUCER PE100

Инжекционно лят
Удължен
SDR11:10 бара газ/16 бара вода
SDR17:5 бара газ/10 бара вода

Injected
Long Spigot
SDR 11:10 bar Gas/16 Water
SDR17:5 bar Gas/10 Water



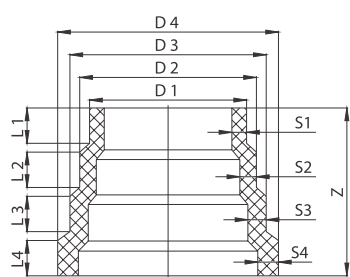
d1	d2	Z	le1	le2	s1/PN16	s2/PN16	s1/PN10	s2/PN10	Кашон
mm	mm	mm	mm	mm	SDR 11	SDR 11	SDR 17	SDR 17	бр.
25	20	120	41	41	3.0	3.0			80
32	25	130	44	41	3.0	3.0			50
32	20	115	44	41	3.0	3.0			50
40	32	130	49	44	3.7	3.0			50
40	25	130	49	41	3.7	3.0			50
50	40	140	55	49	4.6	3.7			40
50	32	140	55	44	4.6	3.0			40
50	25	135	55	41	4.6	3.0			40
63	50	150	63	55	5.8	4.6			20
63	40	150	63	49	5.8	3.7			20
63	32	150	63	44	5.8	3.0			20
63	25	143	63	41	5.8	3.0			20
75	63	175	70	63	6.8	5.8			36
75	50	175	70	55	6.8	4.6	4.5	3.8	36
75	40	170	70	49	6.8	3.7			36
75	32	170	70	44	6.8	3.0			36
90	75	200	79	70	8.2	6.8	5.4	4.5	36
90	63	196	79	63	8.2	5.8	5.4	3.8	36
90	50	190	79	55	8.2	4.6			36
110	90	213	82	79	10.0	8.2	6.6	5.4	30
110	75	216	82	70	10.0	6.8	6.6	4.5	30
110	63	212	82	63	10.0	5.8	6.6	3.8	30
125	110	222	87	82	11.4	10.0	7.4	6.6	18
125	90	222	87	79	11.4	8.2	7.4	5.4	24
125	75	215	87	70	11.4	6.8	7.4	4.5	24
125	63	195	87	63	11.4	5.8	7.4	3.8	24
140	125	225	92	87	12.7	11.4	8.3	7.4	16
140	110	233	92	82	12.7	10.0	8.3	6.6	16
140	90	225	92	79	12.7	8.2	8.3	5.4	16
140	75	225	92	70	12.7	6.8	8.3	4.5	16
160	140	245	98	92	14.6	12.7	9.5	8.3	16
160	125	250	98	87	14.6	11.4	9.5	7.4	16
160	110	250	98	82	14.6	10.0	9.5	6.6	16
160	90	245	98	79	14.6	8.2	9.5	5.4	16
180	160	255	105	98	16.4	14.6	10.7	9.5	6
180	140	250	105	82	16.4	12.7	10.7	8.3	6
180	125	255	105	87	16.4	11.4	10.7	7.4	6
180	110	255	105	82	16.4	10.0	10.7	6.6	6
200	180	275	112	105	18.2	16.4	11.9	10.7	8
200	160	270	112	98	18.2	14.6	11.9	9.5	8
200	140	275	112	92	18.2	12.7	11.9	8.3	8
200	110	275	112	82	18.2	10.0	11.9	6.6	8
225	200	300	120	112	20.5	18.2	13.4	11.9	5
225	180	280	120	105	20.5	16.4	13.4	10.7	5
225	160	280	120	98	20.5	14.6	13.4	9.5	4
225	110	295	120	82	20.5	10.0	13.4	6.6	4
250	225	305	129	120	22.7	20.5	14.8	13.4	2
250	200	310	129	112	22.7	18.2	14.8	11.9	2
250	180	305	129	105	22.7	16.4	14.8	10.7	2
250	160	294	129	98	22.7	14.6	14.8	9.5	2
280	250	348	139	129	25.4	22.7	16.6	14.8	2
280	225	336	139	120	25.4	20.5	16.6	13.4	2
280	200	348	139	112	25.4	18.2	16.6	11.9	2
280	180	348	139	105	25.4	16.4	16.6	10.7	2
315	280	355	150	139	28.6	25.4	18.7	16.6	2
315	250	375	150	129	28.6	22.7	18.7	14.8	2
315	225	375	150	120	28.6	20.5	18.7	13.4	2
400	315	430	179	150	36.4	28.6	23.7	18.7	1

СТЪПКОВ НАМАЛИТЕЛ

STEP REDUCER PE100

Инжекционно лят
Къс
SDR11:10 бара газ/16 бара вода
необходимо оборудване за заварка

*Injected
Short
SDR11:10 bar Gas/16 Water
special equipment required*



SDR 11

D4	D1	D2	D3	L1	L2	L3	L4	Z
mm	mm	mm	mm	mm	mm	mm	mm	mm
225	160	180	200	36	36	36	36	171.0
315	225	250	280	36	36	36	36	171.0
450	315	355	400	36	36	36	36	176.0
630	450	500	560	36	36	36	56	200.0

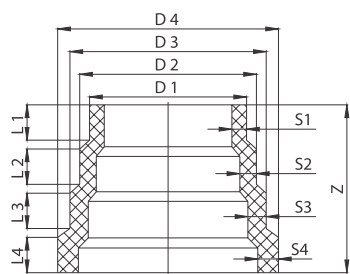
D4	D1	D2	D3	S1	S2	S3	S4	Тегло	Кашон/бр.
mm	mm	mm	mm	mm	mm	mm	mm	kg	
225	160	180	200	14.6	16.4	18.2	20.5	1.740	1
315	225	250	280	20.5	22.7	25.4	28.6	3.656	1
450	315	355	400	28.6	32.3	36.4	40.9	8.328	1
630	450	500	560	40.9	45.5	50.9	57.3	19.270	1

СТЪПКОВ НАМАЛИТЕЛ

STEP REDUCER PE100

Инжекционно лят
Къс
SDR17:5 бара газ/10 бара вода
необходимо оборудване за заварка

*Injected
Short
SDR17:10 bar Gas/16 Water
special equipment required*



SDR 17

D4	D1	D2	D3	L1	L2	L3	L4	Z
mm	mm	mm	mm	mm	mm	mm	mm	mm
225	160	160	160	36	36	36	36	171.0
315	225	225	225	36	36	36	36	171.0
450	315	315	315	36	36	36	36	180.0
630	450	450	450	36	36	36	56	208.0
900	630	630	630	36	36	36	86	188.0
1200	900	1000	1100	50	50	50	76	268.0

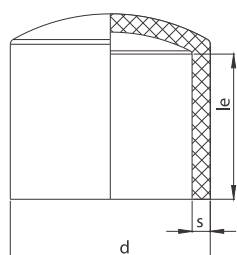
D4	D1	D2	D3	S1	S2	S3	S4	Тегло	Кашон/бр.
mm	mm	mm	mm	mm	mm	mm	mm	kg	
225	160	160	160	9.5	10.7	11.9	13.4	1.262	1
315	225	225	225	13.4	14.8	16.6	18.7	2.465	1
450	315	315	315	18.7	21.1	23.7	26.7	5.840	1
630	450	450	450	26.7	29.7	33.2	37.4	14.040	1
900	630	630	630	37.4	42.1	47.4	53.3	31.000	1
1200	900	1000	1100	53.3	59.3	65	71.0	70.500	1

ТАПА PE100

END CAP PE100

Инжекционно лята
Дълга
SDR11:10 бара газ/16 бара вода

Injected
Long Spigot
SDR 11:10 bar Gas/16 Water



SDR 11

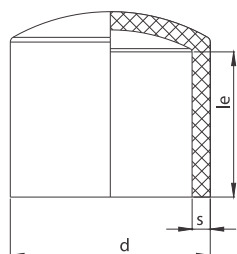
d	Артикулен №	le	s	Тегло	Кашон/бр.
mm		mm	mm	kg	
20	01 117 140 0020	41	3.0	0.008	100
25	01 117 140 0025	41	3.0	0.012	100
32	01 117 140 0032	44	3.0	0.016	100
40	01 117 140 0040	49	3.7	0.028	60
50	01 117 140 0050	55	4.6	0.048	50
63	01 117 140 0063	63	5.8	0.088	36
75	01 117 140 0075	70	6.8	0.142	27
90	01 117 140 0090	79	8.2	0.234	60
110	01 117 140 0110	82	10.0	0.374	36
125	01 117 140 0125	87	11.4	0.542	24
140	01 117 140 0140	92	12.7	0.748	22
160	01 117 140 0160	98	14.6	1.022	15
180	01 117 140 0180	105	16.4	1.416	8
200	01 117 140 0200	112	18.2	1.888	10
225	01 117 140 0225	120	20.5	2.520	4
250	01 117 140 0250	129	22.7	3.240	4
280	01 117 140 0280	139	25.4	4.580	3
315	01 117 140 0315	150	28.6	6.310	2
355	01 117 140 0355	164	32.3	8.700	2
400	01 117 140 0400	179	36.4	12.440	1

ТАПА PE100

END CAP PE100

Инжекционно лята
Дълга
SDR17:5 бара газ/10 бара вода

Injected
Long Spigot
SDR 17:5 bar Gas/10 Water

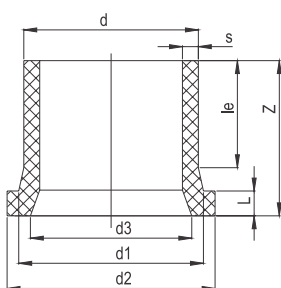


SDR 17

d	Артикулен №	le	s	Тегло	Кашон/бр.
mm		mm	mm	kg	
63	01 115 140 0063	63	3.8	0.079	36
75	01 115 140 0075	70	4.5	0.117	27
90	01 115 140 0090	79	5.4	0.205	60
110	01 115 140 0110	82	6.6	0.308	36
125	01 115 140 0125	87	7.4	0.436	24
140	01 115 140 0140	92	8.3	0.621	22
160	01 115 140 0160	98	9.5	0.863	15
180	01 115 140 0180	105	10.7	1.135	8
200	01 115 140 0200	112	11.9	1.518	10
225	01 115 140 0225	120	13.4	2.113	4
250	01 115 140 0250	129	14.8	2.764	4
280	01 115 140 0280	139	16.6	3.761	3
315	01 115 140 0315	150	18.7	5.191	2
355	01 115 140 0355	164	21.1	7.465	2
400	01 115 140 0400	179	23.7	10.640	1

ФЛАНШОВ НАКРАЙНИК

FLANGED ADAPTER PE100



Инжекционно лят
Удължен
подходящ за бъртерфлай клапи
с фаска, когато е даден d3 размер
*удължен с тръба
SDR11:10 бара газ/16 бара вода

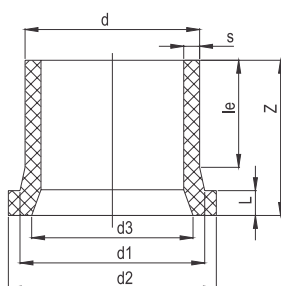
*Injected
Long Spigot
suitable for butterfly valves
chamfered finish, where d3 size is given
*with pipe extension
SDR11:10 bar Gas/16 bar Water*

SDR 11

d	Артикулен №	d1	d2	d3	le	L	Z	s	Тегло	Кашон/бр.
mm		mm	mm	mm	mm	mm	mm	mm	kg	
20	01 117 100 0020	28	45		41	7	80	3.0	0.024	100
25	01 117 100 0025	34	54		41	9	81	3.0	0.038	50
32	01 117 100 0032	42	64		44	10	86	3.0	0.052	40
40	01 117 100 0040	51	78		49	11	88	3.7	0.082	70
50	01 117 100 0050	62	88		55	12	92	4.6	0.122	50
63	01 117 100 0063	78	102		63	14	100	5.8	0.188	60
75	01 117 100 0075	92	122		70	16	120	6.8	0.298	60
90	01 117 100 0090	108	138		79	17	132	8.2	0.436	45
110	01 117 100 0110	125	158		82	18	150	10.0	0.686	24
125	01 117 100 0125	135	158		87	25	165	11.4	0.888	16
140	01 117 100 0140	155	188		92	25	190	12.7	1.318	12
160	01 117 100 0160	175	212	154	98	25	180	14.6	1.576	12
180	01 117 100 0180	188	212	158	105	30	160	16.4	1.672	12
200	01 117 100 0200	230	268	208	112	32	200	18.2	2.745	4
225	01 117 100 0225	238	268	208	120	32	196	20.5	3.108	4
250	01 117 100 0250	288	320	260	129	35	205	22.7	3.782	2
280	01 117 100 0280	288	320	260	139	35	215	25.4	4.724	2
315	01 117 100 0315	338	375	305	150	35	224	28.6	6.346	2
355	01 117 100 0355	376	435	345	164	45	240	32.3	9.188	1
400	01 117 100 0400	430	485	396	179	50	264	36.4	12.7	1
*450(DN450)	K01 117 101 4500	465	545	442	195	66	360	40.9	21.770	1
*450(DN500)	K01 117 101 0450	517	585	480	195	65	360	40.9	22.89	1
*500	K01 117 101 0500	530	590	494	212	60	354	45.5	25.060	1
*560	K01 117 101 0560	618	690	580	235	80	423	50.9	38.8	1
*630	K01 117 101 0630	645	690	576	255	65	404	57.3	42.400	1
*710	K01 117 101 0710	740	800	663	282	75	447	64.5	61.198	1

ФЛАНШОВ НАКРАЙНИК

FLANGED ADAPTER PE100



Инжекционно лят
Удължен
подходящ за бъртерфлай клапи
с фаска, когато е даден d3 размер
*удължен с тръба
SDR17:5 бара газ/10 бара вода

*Injected
Long Spigot
suitable for butterfly valves
chamfered finish, where d3 size is given
*with pipe extension
SDR17:5 bar Gas/10 bar Water*

SDR 17

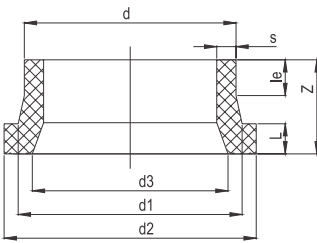
d	Артикулен №	d1	d2	d3	le	L	Z	s	Тегло	Кашон/бр.
mm		mm	mm	mm	mm	mm	mm	mm	kg	
63	01 115 100 0063	78	102		63	14	100	3.8	0.176	60
75	01 115 100 0075	92	122		70	16	120	4.5	0.272	60
90	01 115 100 0090	108	138		79	17	116	5.4	0.338	45
110	01 115 100 0110	125	158		82	17	150	6.6	0.54	24
125	01 115 100 0125	135	158		87	18	165	7.4	0.762	16
140	01 115 100 0140	155	188		92	18	188	8.3	1.108	12
160	01 115 100 0160	175	212	154	98	18	175	9.5	1.104	12
180	01 115 100 0180	188	212	164	105	20	156	10.7	1.11	12
200	01 115 100 0200	230	268	208	112	24	188	11.9	1.912	4
225	01 115 100 0225	238	268	208	120	24	205	13.4	2.316	4
250	01 115 100 0250	288	320	260	129	25	195	14.8	2.841	2
280	01 115 100 0280	288	320	260	139	25	213	16.6	3.958	2
315	01 115 100 0315	338	375	305	150	25	221	18.7	4.490	2
355	01 115 100 0355	376	435	350	164	30	227	21.1	6.062	1
400	01 115 100 0400	430	485	396	179	33	242	23.7	8.328	1
*450(DN450)	K01 115 101 4500	465	545	442	195	45	335	26.7	14.26	1
*450(DN500)	K01 115 101 0450	517	585	485	195	45	335	26.7	15.120	1
*500	K01 115 101 0500	530	590	497	212	46	339	29.7	16.88	1
*560	K01 115 101 0560	618	690	580	235	50	373	33.2	24.170	1
*630	K01 115 101 0630	645	690	585	255	50	384	37.4	28.42	1
*710	K01 115 101 0710	740	800	670	282	50	422	42.1	40.540	1
*800	K01 115 101 0800	843	900	780	312	60	463	47.4	55.39	1
*900	K01 115 101 0900	947	1000	884	345	60	507	53.3	74.350	1
*1000	K01 115 101 1000	1050	1112	972	379	65	557	59.3	101.26	1
*1200	K01 115 101 1200	1260	1340	1167	447	75	662	70.6	171.920	1

ФЛАНШОВ НАКРАЙНИК

FLANGED ADAPTER PE100

Инжекционно лят
къс
подходящ за бъртерфлай клапи
с фаска, когато е даден d3 размер
SDR11:10 бара газ/16 бара вода

*Injected
short
suitable for butterfly valves
chamfered finish, where d3 size is given
SDR11:10 bar Gas/16 bar Water*



SDR 11

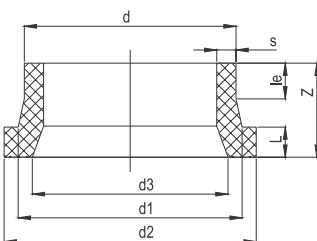
d	Артикулен №	d1	d2	d3	le	L	Z	s	Тегло	Кашон/бр.
mm		mm	mm	mm	mm	mm	mm	mm	kg	
200	01 117 101 0200	230	268	208	50	32	120	18.2	1.860	8
225	01 117 101 0225	238	268	208	50	32	120	20.5	1.98	8
250	01 117 101 0250	288	320	260	45	35	120	22.7	2.640	4
280	01 117 101 0280	288	320	260	46	35	120	25.4	2.871	4
315	01 117 101 0315	338	375	305	47	35	120	28.6	3.730	4
355	01 117 101 0355	376	435	345	45	45	120	32.3	5.3	1
400	01 117 101 0400	430	485	396	45	50	124	36.4	6.740	1
450(DN450)	01 117 101 4500	465	545	442	45	66	160	40.9	11.52	1
450(DN500)	01 117 101 0450	517	585	480	40	65	160	40.9	12.640	1
500	01 117 101 0500	530	590	494	40	60	134	45.5	11.28	1
560	01 117 101 0560	618	690	580	43	80	180	50.8	19.710	1
630	01 117 101 0630	645	690	576	45	65	140	57.2	16.16	1
710	01 117 101 0710	740	800	663	40	75	154	64.9	24.150	1

ФЛАНШОВ НАКРАЙНИК

FLANGED ADAPTER PE100

Инжекционно лят
къс
подходящ за бъртерфлай клапи
с фаска, когато е даден d3 размер
SDR17:5 бара газ/10 бара вода

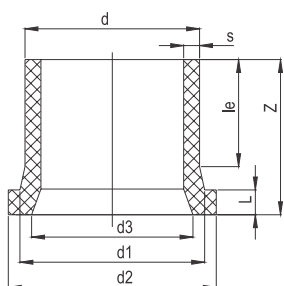
*Injected
short
suitable for butterfly valves
chamfered finish, where d3 size is given
SDR17:5 bar Gas/10 bar Water*



SDR 17

d	Артикулен №	d1	d2	d3	le	L	Z	s	Тегло	Кашон/бр.
mm		mm	mm	mm	mm	mm	mm	mm	kg	
200	01 115 101 0200	230	268	208	57	24	120	11.9	1.390	8
225	01 115 101 0225	238	268	208	61	24	120	13.4	1.45	8
250	01 115 101 0250	288	320	260	55	25	120	14.8	1.940	4
280	01 115 101 0280	288	320	260	56	25	120	16.6	2.09	4
315	01 115 101 0315	338	375	305	57	25	120	18.7	2.720	4
355	01 115 101 0355	376	435	350	60	30	120	21.1	3.8	1
400	01 115 101 0400	430	485	396	52	33	120	23.7	4.710	1
450(DN450)	01 115 101 4500	465	545	442	40	45	134	26.7	7.3	1
450(DN500)	01 115 101 0450	517	585	485	40	45	134	26.7	8.160	1
500	01 115 101 0500	530	590	497	45	46	120	29.7	7.54	1
560	01 115 101 0560	618	690	580	36	50	130	33.2	11.210	1
630	01 115 101 0630	645	690	585	45	50	120	37.4	10.6	1
710	01 115 101 0710	740	800	670	40	50	130	42.1	15.610	1
800	01 115 101 0800	843	900	780	45	60	140	47.4	20.45	1
900	01 115 101 0900	947	1000	884	45	60	150	53.3	25.550	1
1000	01 115 101 1000	1050	1112	972	45	65	165	59.3	35.07	1
1200	01 115 101 1200	1260	1340	1167	45	75	200	70.6	60.540	1

ФЛАНШОВ НАКРАЙНИК ANSI FLANGED ADAPTER ANSI PE100



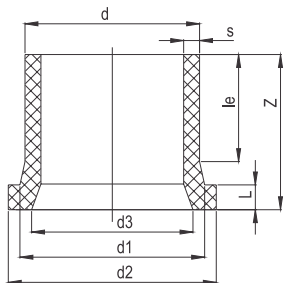
Инжекционно лят
Удължен
подходящ за бъртерфлай клапи
подходящ за ansi фланци
с фаска, когато е даден d3 размер
*удължен с тръба
**Необходимо разстояние за бъртерфлай
SDR11:10 бара газ/16 бара вода

*Injected
Long Spigot
suitable for butterfly valves
suitable for ansi flanges
chamfered finish, where d3 size is given
*with pipe extension
**Needs spacer for butterfly valves
SDR11:10 bar Gas/16 bar Water*

SDR 11

d	Артикулен №	d1	d2	d3	le	L	Z	s	Тегло	Кашон/бр.
mm		mm	mm	mm	mm	mm	mm	mm	kg	
40	01 117 106 0040	51	74		49	11	88	3.7	0.072	70
50	01 117 106 0050	62	82		55	12	92	4.6	0.122	50
63	01 117 106 0063	78	100		63	14	100	5.8	0.180	60
75	01 117 106 0075	92	119		70	16	120	6.8	0.290	60
90	01 117 106 0090	108	132		79	17	132	8.2	0.410	45
*560	K01 117 106 0560	580	654	**549	235	80	423	50.9	38.400	1
*630	K01 117 106 0630	650	710	576	255	65	404	57.3	43.500	1

ФЛАНШОВ НАКРАЙНИК ANSI FLANGED ADAPTER ANSI PE100



Инжекционно лят
Удължен
подходящ за бъртерфлай клапи
подходящ за ansi фланци
с фаска, когато е даден d3 размер
*удължен с тръба
SDR17:5 бара газ/10 бара вода

*Injected
Long Spigot
suitable for butterfly valves
suitable for ansi flanges
chamfered finish, where d3 size is given
*with pipe extension
SDR17:5 bar Gas/10 bar Water*

SDR 17

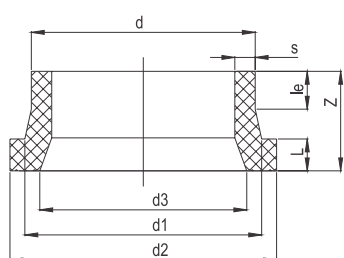
d	Артикулен №	d1	d2	d3	le	L	Z	s	Тегло	Кашон/бр.
mm		mm	mm	mm	mm	mm	mm	mm	kg	
63	01 115 106 0063	78	100		63	14	100	3.8	0.176	60
75	01 115 106 0075	92	119		70	16	120	4.5	0.272	60
90	01 115 106 0090	108	132		79	17	132	5.4	0.338	45
*560	K01 115 106 0560	580	654	570	235	80	423	33.2	24.170	1
*630	K01 115 106 0630	650	710	585	255	50	404	37.4	29.400	1
*900	K01 115 106 0900	940	1000	884	345	60	507	53.3	73.200	1
*1000	K01 115 106 1000	1040	1112	972	379	65	557	59.3	100.500	1
*1200	K01 115 106 1200	1240	1340	1167	447	75	662	70.6	170.200	1

ФЛАНШОВ НАКРАЙНИК

FLANGED ADAPTER PE100

Инжекционно лят
къс
подходящ за бѳтерфлай клапи
подходящ за ansi фланци
с фаска, когато е даден d3 размер
**Необходимо разстояние за бѳтерфлай
SDR11:10 бара газ/16 бара вода

*Injected
short
suitable for butterfly valves
suitable for ansi flanges
chamfered finish, where d3 size is given
**Needs spacer for butterfly valves
SDR11:10 bar Gas/16 bar Water*



SDR 11

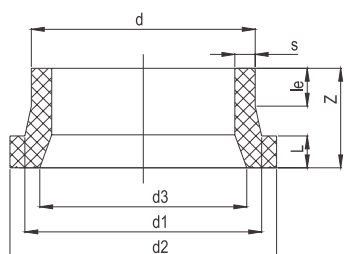
d	Артикулен №	d1	d2	d3	le	L	Z	s	Тегло	Кашон/бр.
mm		mm	mm	mm	mm	mm	mm	mm	kg	
560	01 117 107 0560	580	654	*549	43	80	180	50.9	19.200	1
630	01 117 107 0630	650	710	576	45	65	140	57.3	16.600	1

ФЛАНШОВ НАКРАЙНИК

FLANGED ADAPTER PE100

Инжекционно лят
къс
подходящ за бѳтерфлай клапи
подходящ за ansi фланци
с фаска, когато е даден d3 размер
SDR17:5 бара газ/10 бара вода

*Injected
short
suitable for butterfly valves
suitable for ansi flanges
chamfered finish, where d3 size is given
SDR17:5 bar Gas/10 bar Water*



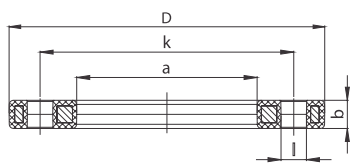
SDR 17

d	Артикулен №	d1	d2	d3	le	L	Z	s	Тегло	Кашон/бр.
mm		mm	mm	mm	mm	mm	mm	mm	kg	
560	01 115 107 0560	580	654	570	43	80	180	33.2	12.930	1
630	01 115 107 0630	650	710	585	45	50	120	37.4	11.200	1
900	01 115 107 0900	940	1000	884	45	60	150	53.3	25.500	1
1000	01 115 107 1000	1040	1112	972	45	65	165	59.3	35.000	1
1200	01 115 107 1200	1240	1340	1167	45	75	200	70.6	60.300	1

ФЛАНЕЦ С ПП-ПОКРИТИЕ, метричен *PP COVERED FLANGE*

Стоманен фланец с покритие от ПП,
усилен с 30% стъклени влакна
Подходящ за приложение на открито
UV-устойчив
Присъединителни размери съгласно:
ISO7008, En1092, DIN2501, BS 4504
Окръжност на отворите PN16

*PP covered flange with steel core,
metric
UV-Resistant
Suitable for outdoor use
Connecting dimension :ISO 7005,
EN 1092, DIN 2501, BS 4504
Bolt circle PN16*



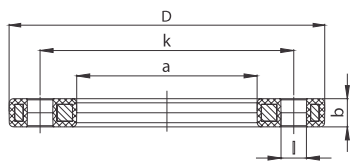
PN 16

d	DN	Артикулен №	D	a	k	b	l	Bolt type вид болт	No of holes брой отвори	Тегло	Кашон/бр.
mm	mm		mm	mm	mm	mm	mm	mm	mm	kg	
20	15	05 117 120 0020	95	28	65	12	14	M12	4	0.232	85
25	20	05 117 120 0025	105	34	75	12	14	M12	4	0.288	68
32	25	05 117 120 0032	115	42	85	16	14	M12	4	0.544	52
40	32	05 117 120 0040	140	51	100	16	18	M16	4	0.836	20
50	40	05 117 120 0050	150	62	110	18	18	M16	4	0.902	15
63	50	05 117 120 0063	165	78	125	18	18	M16	4	1.074	15
75	65	05 117 120 0075	188	92	145	18	18	M16	4	1.368	15
90	80	05 117 120 0090	204	108	160	20	18	M16	8	1.516	10
110	100	05 117 120 0110	224	128	180	20	18	M16	8	1.960	10
125	100	05 117 120 0125	224	135	180	20	18	M16	8	1.938	10
140	125	05 117 120 0140	252	158	210	24	18	M16	8	2.866	6
160	150	05 117 120 0160	285	178	240	24	22	M20	8	3.576	6
180	150	05 117 120 0180	285	188	240	24	22	M20	8	3.298	6
200	200	05 117 120 0200	340	235	295	27	22	M20	12	5.032	4
225	200	05 117 120 0225	340	238	295	27	22	M20	12	4.900	4
250	250	05 117 120 0250	419	288	355	32	26	M24	12	10.182	2
280	250	05 117 120 0280	419	294	355	32	26	M24	12	9.860	2
315	300	05 117 120 0315	478	338	410	34	26	M24	12	13.150	2
355	350	05 117 120 0355	532	376	470	42	26	M24	16	22.200	1
400	400	05 117 120 0400	592	430	525	46	30	M27	16	26.214	1

ФЛАНЕЦ С ПП-ПОКРИТИЕ, метричен *PP COVERED FLANGE*

Стоманен фланец с покритие от ПП,
усилен с 30% стъклени влакна
Подходящ за приложение на открито
UV-устойчив
Присъединителни размери съгласно:
ISO7008, En1092, DIN2501, BS 4504
Окръжност на отворите PN10

*PP covered flange with steel core,
metric
UV-Resistant
Suitable for outdoor use
Connecting dimension :ISO 7005,
EN 1092, DIN 2501, BS 4504
Bolt circle PN10*



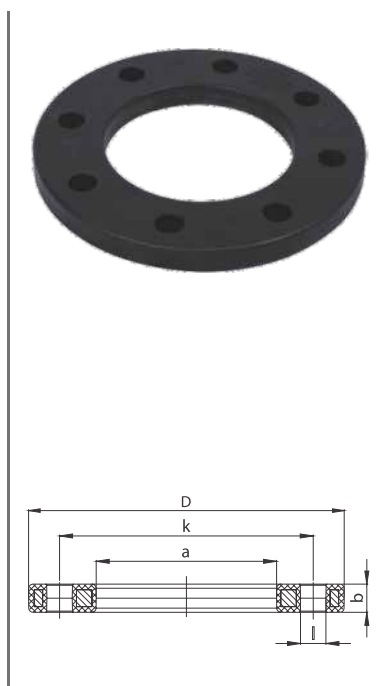
PN 10

d	DN	Артикулен №	D	a	k	b	l	Bolt type вид болт	No of holes брой отвори	Тегло	Кашон/бр.
mm	mm		mm	mm	mm	mm	mm	mm	mm	kg	
200	200	05 115 120 0200	340	235	295	27	22	M20	8	5.318	4
225	200	05 115 120 0225	340	238	295	27	22	M20	8	5.500	4
250	250	05 115 120 0250	395	288	350	30	22	M20	12	6.962	4
280	250	05 115 120 0280	395	294	350	30	22	M20	12	7.092	4
315	300	05 115 120 0315	445	338	400	34	22	M20	12	9.428	2
355	350	05 115 120 0355	514	376	460	40	22	M20	16	19.285	1
400	400	05 115 120 0400	571	430	515	40	26	M24	16	21.370	1
450	500	05 115 120 0450	678	517	620	45	26	M24	20	34.520	1
500	500	05 115 120 0500	688	533	620	45	26	M24	20	34.000	1
560	600	05 115 120 0560	799	618	725	50	30	M27	20	49.000	1
630	600	05 115 120 0630	799	645	725	50	30	M27	20	40.000	1

ФЛАНЕЦ С ПП-ПОКРИТИЕ, ANSI *PP COVERED FLANGE, ANSI*

Стоманен фланец с покритие от ПП,
усилен с 30% стъклени влакна
Подходящ за приложение на открито
UV-устойчив
Присъединителни размери съгласно:
ANSI ASME B16.5 клас 150, ASTM d4024
BS 1560, BS EN 1759
Окръжност на отворите клас 150

*PP covered flange with steel core,
metric
UV-Resistant
Suitable for outdoor use
Connecting dimension:
ANSI ASME B16.5 клас 150, ASTM d4024
BS 1560, BS EN 1759
Bolt circle class 150*



Окръжност на отворите клас 150

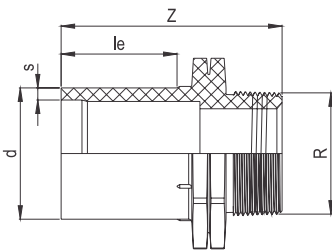
d	DN	inch	Артикулен №	D	a	k	b	l	Bolt type вид болт	No of holes брой отвори	Тегло	Кашон/бр.
mm	mm			mm	mm	mm	mm	mm	mm	mm	kg	
20	15	½"	05 117 121 0020	95	28	60.5	12	16	M12	4	0.200	85
25	20	¾"	05 117 121 0025	102	34	69.9	12	16	M12	4	0.024	68
32	25	1"	05 117 121 0032	114	42	79.3	16	16	M12	4	0.490	52
40	32	1¼"	05 117 121 0040	130	51	88.9	16	16	M12	4	0.670	20
50	40	1½"	05 117 121 0050	133	62	98.6	18	16	M12	4	0.640	15
63	50	2"	05 117 121 0063	162	78	120.6	18	20	M16	4	1.000	15
75	65	2½"	05 117 121 0075	184	92	139.7	18	20	M16	4	1.310	15
90	80	3"	05 117 121 0090	194	111	152.4	18	20	M16	4	1.250	10
110	125	4"	05 117 121 0110	229	133	190.5	18	20	M16	8	1.660	10
160	150	6"	05 117 121 0160	283	178	241.3	24	22	M20	8	3.750	6
180	150	6"	05 117 121 0161	285	188	241.3	24	22	M20	8	3.298	6
200	225	8"	05 117 121 0200	345	236	298.5	24	22	M20	8	5.140	4
250	280	10"	05 117 121 0250	412	288	361.9	27	25	M22	12	8.080	2
315	300	12"	05 117 121 0315	487	338	431.8	32	25	M22	12	15.380	2
355	350	14"	05 117 121 0355	533	376	476.2	42	28.5	M27	12	24.940	1
400	400	16"	05 117 121 0400	596	430	539.7	44	28.5	M27	16	34.770	1

ПРЕХОД ПЕ/ПЕ PE100

TRANSITION ADAPTOR PE

С външна резба
 Инжекционно лят
 Удължен
 SDR11:10 бара вода

Male Threaded
 Injected
 Long Spigot
 SDR 11:10 bar Water



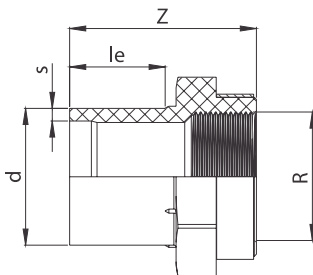
d	R	Артикулен №	le	Z	s	Тегло	Кашон/бр.
mm	inch		mm	mm	mm	kg	
20	½"	01 117 210 0020	34	65	3.0	0.020	100
25	¾"	01 117 210 0025	33	65	3.0	0.023	100
32	1"	01 117 210 0032	38	73	3.0	0.040	90
40	1"	01 117 210 4001	44	80	3.7	0.060	100
40	1¼"	01 117 210 0040	44	83	3.7	0.065	100
50	1½"	01 117 210 0050	48	87	4.6	0.092	100
63	1½"	01 117 210 6301	62	101	5.8	0.156	60
63	2"	01 117 210 0063	62	106	5.8	0.166	60

ПРЕХОД ПЕ/ПЕ PE100

TRANSITION ADAPTOR PE

С вътрешна резба
 Инжекционно лят
 Удължен
 Подсилен неръждаем пръстен
 SDR11:10 бара вода

Female Threaded
 Injected
 Long Spigot
 Reinforced ring stainless
 SDR 11:10 bar Water



d	R	Артикулен №	le	Z	s	Тегло	Кашон/бр.
mm	inch		mm	mm	mm	kg	
20	½"	01 117 211 0020	34	59	3.0	0.020	100
25	¾"	01 117 211 0025	34	61	3.0	0.023	100
32	1"	01 117 211 0032	37	68	3.0	0.045	90
40	1"	01 117 211 4001	41	72	3.7	0.070	100
40	1¼"	01 117 211 0040	42	79	3.7	0.065	100
50	1½"	01 117 211 0050	49	86	4.6	0.105	100
63	1½"	01 117 211 6301	49	86	5.8	0.180	60
63	2"	01 117 211 0063	48	90	5.8	0.156	60

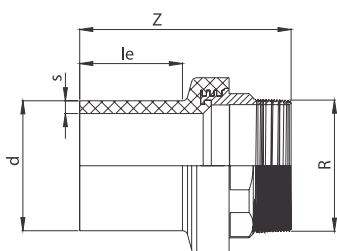
ПРЕХОД ПЕ/месинг PE100 *TRANSITION ADAPTOR PE-BRASS*

С външна резба

Инжекционно лят
Удължен
SDR11:16 бара вода

Male Threaded

*Injected
Long Spigot
SDR 11:16 bar Water*



d	R	Артикулен №	le	Z	s	Тегло	Кашон/бр.
mm	inch		mm	mm	mm	kg	
20	½"	01 117 200 0020	90	41	3.0	0.084	100
25	¾"	01 117 200 0025	84	41	3.0	0.104	75
32	1"	01 117 200 0032	103	44	3.0	0.208	50
40	1¼"	01 117 200 0040	122	49	3.7	0.310	25
50	1½"	01 117 200 0050	121	55	4.6	0.398	25
63	2"	01 117 200 0063	140	63	5.8	0.578	10
75	2½"	01 117 200 0075	146	70	6.8	0.982	9
90	3"	01 117 200 0090	168	79	8.2	1.380	5
110	4"	01 117 200 0110	179	82	10.0	2.030	2
125	4"	01 117 200 0125	186	87	11.4	2.226	2

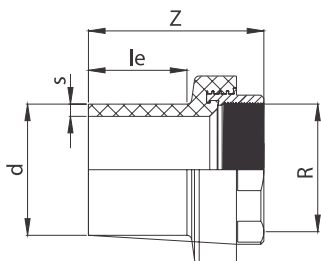
ПРЕХОД ПЕ/месинг PE100 *TRANSITION ADAPTOR PE-BRASS*

С вътрешна резба

Инжекционно лят
Удължен
SDR11:16 бара вода

Female Threaded

*Injected
Long Spigot
SDR 11:16 bar Water*

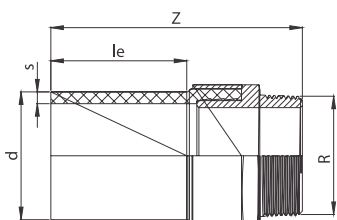


d	R	Артикулен №	le	Z	s	Тегло	Кашон/бр.
mm	inch		mm	mm	mm	kg	
20	½"	01 117 201 0020	72	41	3.0	0.058	100
25	¾"	01 117 201 0025	72	41	3.0	0.072	98
32	1"	01 117 201 0032	84	44	3.0	0.152	48
40	1¼"	01 117 201 0040	98	49	3.7	0.318	18
50	1½"	01 117 201 0050	101	55	4.6	0.304	18
63	2"	01 117 201 0063	115	63	5.8	0.386	16
75	2½"	01 117 201 0075	129	70	6.8	0.828	9
90	3"	01 117 201 0090	144	79	8.2	1.122	5
110	4"	01 117 201 0110	147	82	10.0	1.732	4
125	4"	01 117 201 0125	153	87	11.4	1.806	2

ПРЕХОД ПЕ/месинг PE100 *TRANSITION ADAPTOR PE-BRASS*

С външна резба
 Инжекционно лят
 Удължен
 SDR11:10 бара газ/16 бара вода

Male Threaded
Injected
Long Spigot
 SDR 11:10 bar Gas, 16 bar Water

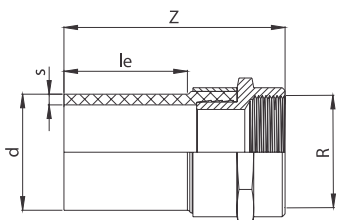


d	R	Артикулен №	le	Z	s	Тегло	Кашон/бр.
mm	inch		mm	mm	mm	kg	
20	½"	01 117 205 0020	80	43	3.0	0.069	100
20	¾"	01 117 205 2001	81	43	3.0	0.097	75
25	¾"	01 117 205 0025	80	43	3.0	0.099	75
32	1"	01 117 205 0032	87	46	3.0	0.150	50
40	1¼"	01 117 205 0040	98	52	3.7	0.252	25
50	1½"	01 117 205 0050	114	65	4.6	0.176	25
63	2"	01 117 205 0063	124	67	5.8	1.375	10

ПРЕХОД ПЕ/месинг PE100 *TRANSITION ADAPTOR PE-BRASS*

С вътрешна резба
 Инжекционно лят
 Удължен
 SDR11:10 бара газ/16 бара вода

Female Threaded
Injected
Long Spigot
 SDR 11:10 bar Gas, 16 bar Water



d	R	Артикулен №	le	Z	s	Тегло	Кашон/бр.
mm	inch		mm	mm	mm	kg	
20	½"	01 117 206 0020	76	43	3.0	0.076	100
20	¾"	01 117 206 2001	78	43	3.0	0.102	98
25	¾"	01 117 206 0025	77	43	3.0	0.104	98
32	1"	01 117 206 0032	82	45	3.0	0.154	48
40	1¼"	01 117 206 0040	95	52	3.7	0.265	18
50	1½"	01 117 206 0050	109	65	4.6	0.763	18
63	2"	01 117 206 0063	120	67	5.8	1.394	16

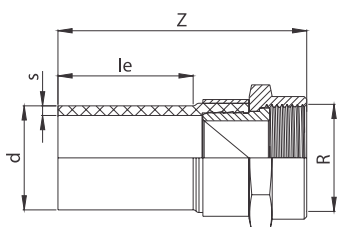
ПРЕХОД ПЕ/месинг PE100 *TRANSITION ADAPTOR PE-BRASS*

Свободна гайка

Инжекционно лят
Удължен
SDR11:16 бара вода

Loose nut

*Injected
Long Spigot
SDR 11:16 bar Water*



SDR 11:10 бара газ/16 бара вода

SDR 11:10 bar Gas/16 bar Water

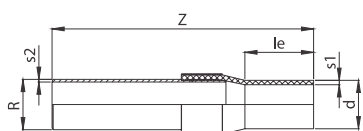
d	R	Артикулен №	le	Z	s	Терло	Кашон/бр.
mm	inch		mm	mm	mm	kg	
20	¾"	01 117 207 0020	78	43	3.0	0.086	100
20	¾"	01 117 207 2001	78	43	3.0	0.112	98
25	¾"	01 117 207 0025	77	43	3.0	0.113	98
32	1"	01 117 207 0032	85	45	3.0	0.184	48
40	1¼"	01 117 207 0040	97	52	3.7	0.289	18
50	1½"	01 117 207 0050	112	65	4.6	0.860	18
63	2"	01 117 207 0063	122	67	5.8	1.433	16

ПРЕХОД ПЕ/стомана

TRANSITION ADAPTOR PE-STEEL

Инжекционно лят
Стоманена тръба API 5L En10208,
с антикорозионно епоксидно покритие
С край за челна заварка
PE 100 SDR 11

*Injected
Steel pipe API 5L En10208, epoxy
coated for corrosion resistance
Welding end
PE 100 SDR 11*



d	R	Артикулен №	Z	le	s1	s2	Терло	Кашон/бр.
mm	inch		mm	mm	mm	mm	kg	
25	¾"	01 117 180 0025	43	396	3.0	2.9	0.650	30
32	1"	01 117 180 0032	100	440	3.0	3.4	0.950	16
40	1¼"	01 117 180 0040	57	404	3.7	3.6	1.310	10
50	1½"	01 117 180 0050	62	420	4.6	3.7	1.570	9
63	2"	01 117 180 0063	106	483	5.8	3.9	2.450	9
75	2½"	01 117 180 0075	70	474	6.8	5.2	3.710	4
90	3"	01 117 180 0090	83	492	8.2	5.5	5.110	4
110	4"	01 117 180 0110	156	583	10.0	6.0	7.760	2
125	4"	01 117 180 0125	92	525	11.4	6.0	7.670	2
125	6"	01 117 180 1256	170	666	11.4	7.1	14.900	1
160	6"	01 117 180 0160	110	592	14.6	7.1	14.744	1
180	6"	01 117 180 0180	110	591	16.4	7.1	15.480	1
200	8"	01 117 180 0200	112	675	18.2	8.2	44.510	1
225	8"	01 117 180 0225	120	675	20.5	8.2	44.840	1
250	10"	01 117 180 0250	129	765	22.7	9.3	71.890	1
280	10"	01 117 180 0280	139	745	25.4	9.3	72.080	1
315	12"	01 117 180 0315	150	850	28.6	9.5	106.370	1